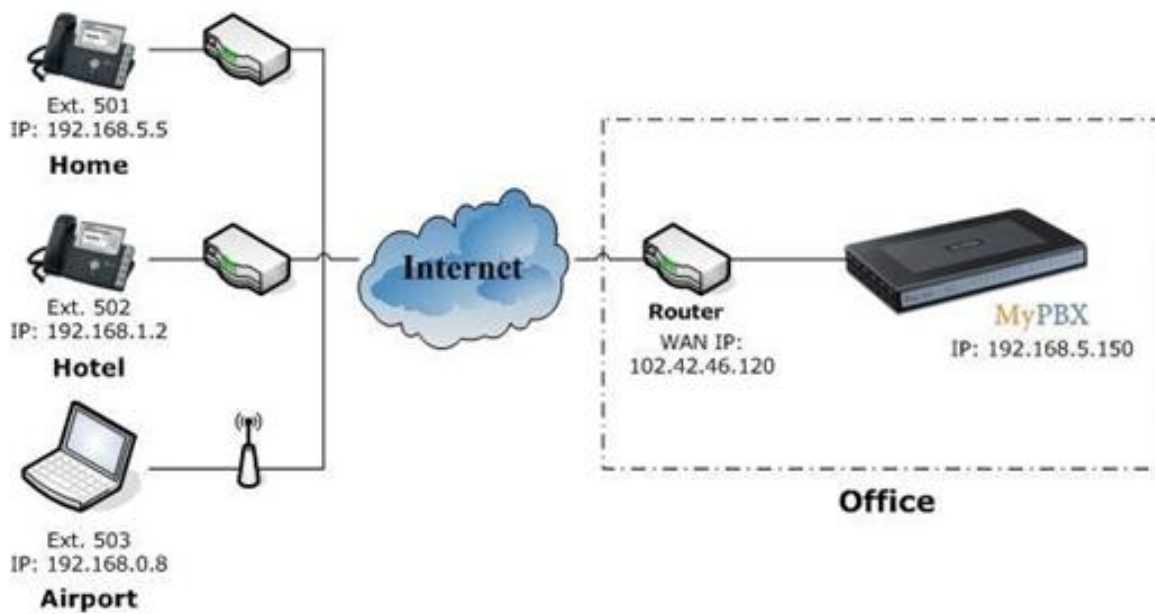


## Udaljena registracija na MyPBX server

Generalno okruženje za MyPBX i korisnika na drugoj lokaciji je: MyPBX i korisnik su iza rutera i koriste privatne IP adrese.

### Dijagram toka:



**Napomena:** Pošto MyPBX nema javnu IP adresu, moramo podesiti "port forwarding" funkciju rutera.

**Korak 1** Podesite "port forwarding" funkciju rutera za MyPBX.

Primer: javna IP adresa rutera je '102.42.46.120'.

Zato što je MyPBX iza rutera morate da prosledite SIP port na vašem ruteru, kako bi svi paketi primljeni na WAN port rutera (102.42.46.120:5060) bili prosleđeni na MyPBX (192.168.5.150:5060). Ispod je strana za podešavanje na Linksys ruteru:

**Napomena:** Moramo mapirati UDP port 5060 i UDP port 10001-12000.

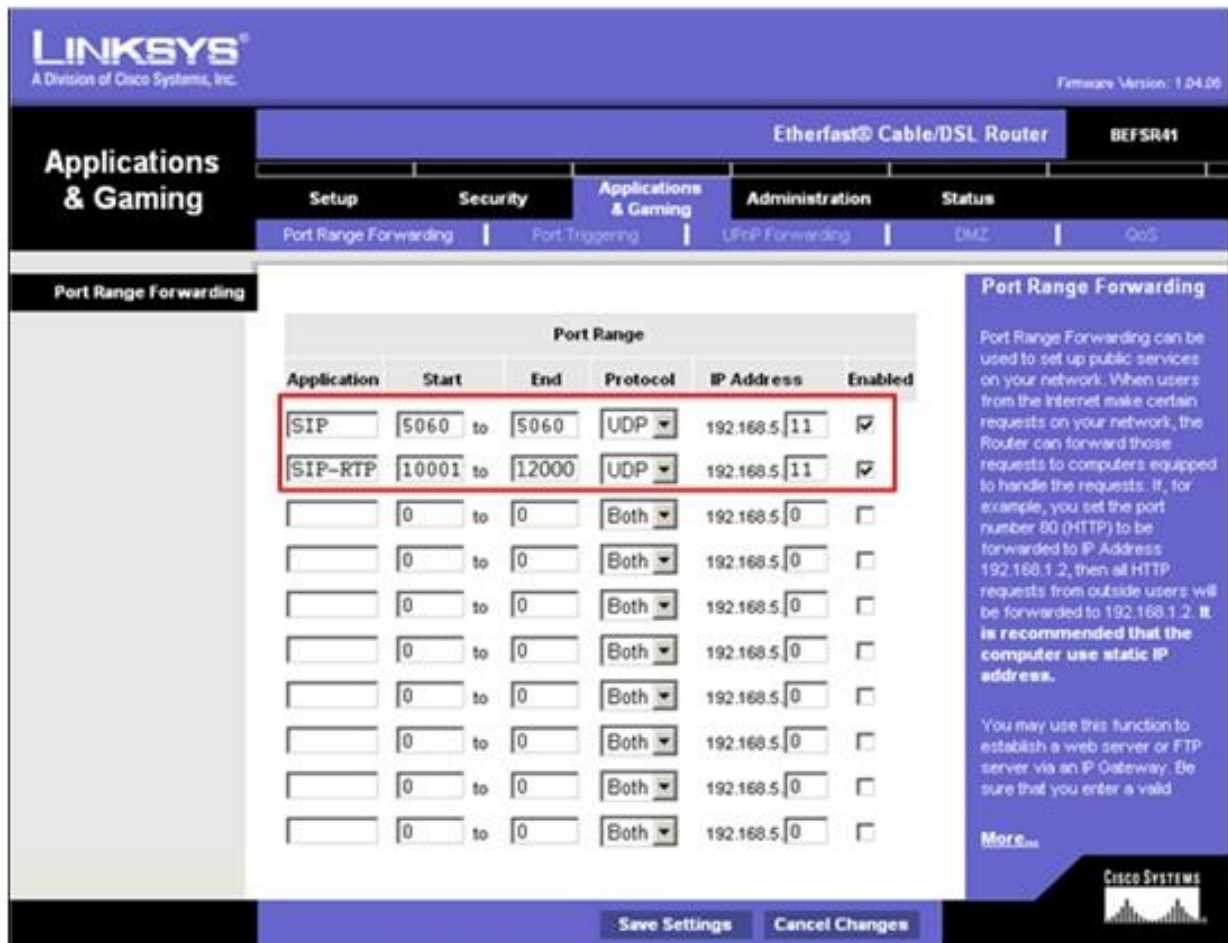


Figure 1

**Korak 2** Konfigurirate NAT podešavanja na MyPBX-u.

MyPBX -> SIP Settings -> NAT, konfigurirate NAT podešavanja prema strani ispod.

**poljna External IP:** Javna IP adresa Vašeg rutera

**External Host:**

**External refresh:**

**Local Network Address:** 192.168.5.0/255.255.255.0 (promenite ovo u skladu sa Vašom konfiguracijom mreže)

**NAT mode:** Yes

**Allow RTP Reinvite:** No

Extern IP ⓘ:	<input type="text" value="102.42.46.120"/>
Extern Host ⓘ:	<input type="text"/>
Extern Refresh ⓘ:	<input type="text"/>
Local Network Address ⓘ:	<input type="text" value="192.168.5.0/255.255.255.0"/>
NAT Mode ⓘ:	<input type="text" value="yes"/>
Allow RTP Reinvite ⓘ:	<input type="text" value="no"/>

Figure 2-6

**Korak 3** podesite lokal na MyPBX-u (napr.:509).

### General

Type: SIP;

Extension:509; Broj telefona ovog lokala

Password: 509;

Name: 509;

Caller ID: 509;

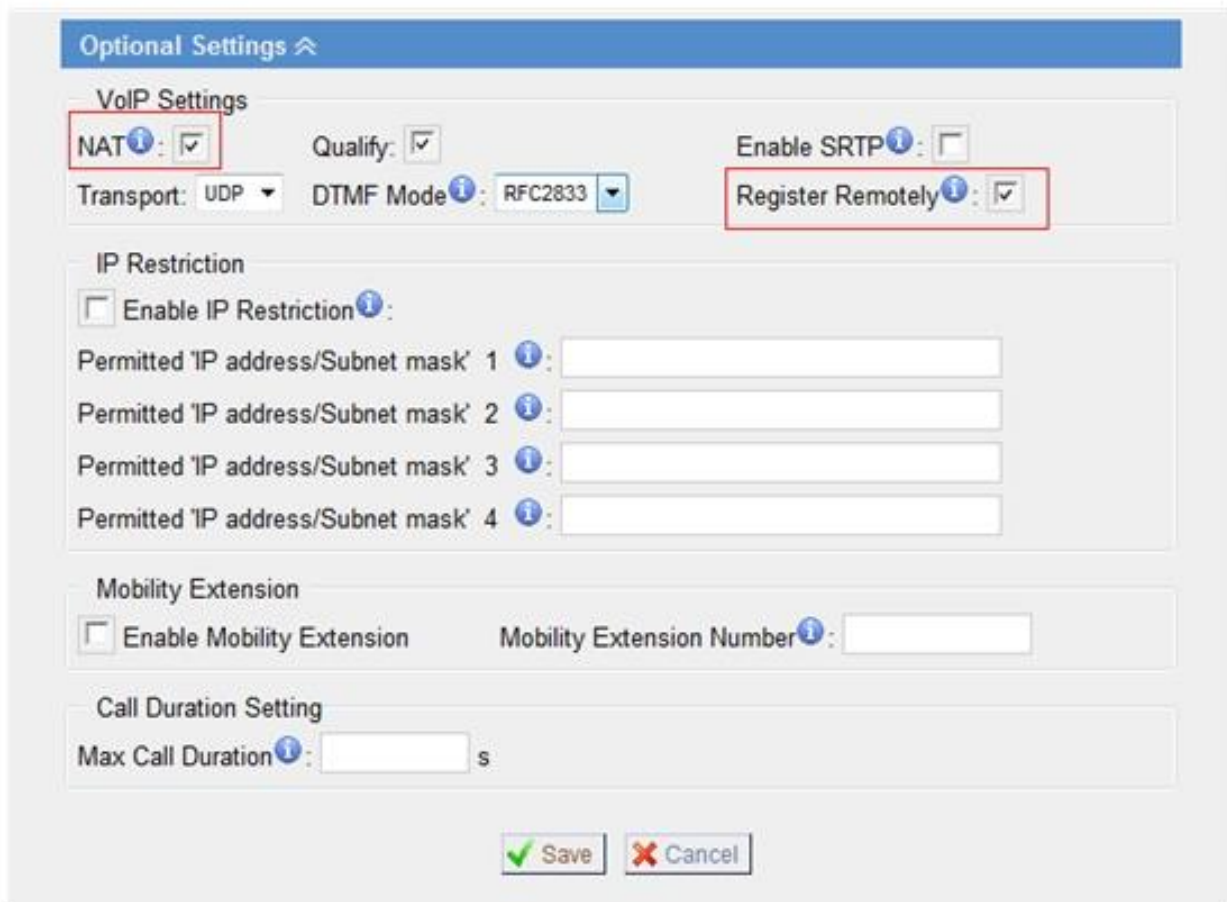
### VoIP Podešavanja

NAT: yes

**Napomena:** Molimo omogućite NAT.

Register Remotely: yes

**Napomena:** Ukoliko je verzija firmware-a MyPBX-a veća ili jednaka sa X.17.X.X, treba da postoji opcija na „extension edit“ strani.



The screenshot shows the 'Optional Settings' configuration page for a SIP extension. The 'VoIP Settings' section is expanded, showing the following options:

- NAT:**  (highlighted with a red box)
- Quality:**
- Enable SRTP:**
- Transport:** UDP
- DTMF Mode:** RFC2833
- Register Remotely:**  (highlighted with a red box)

The 'IP Restriction' section is also visible, with the 'Enable IP Restriction' checkbox unchecked and four empty input fields for permitted IP addresses/subnet masks.

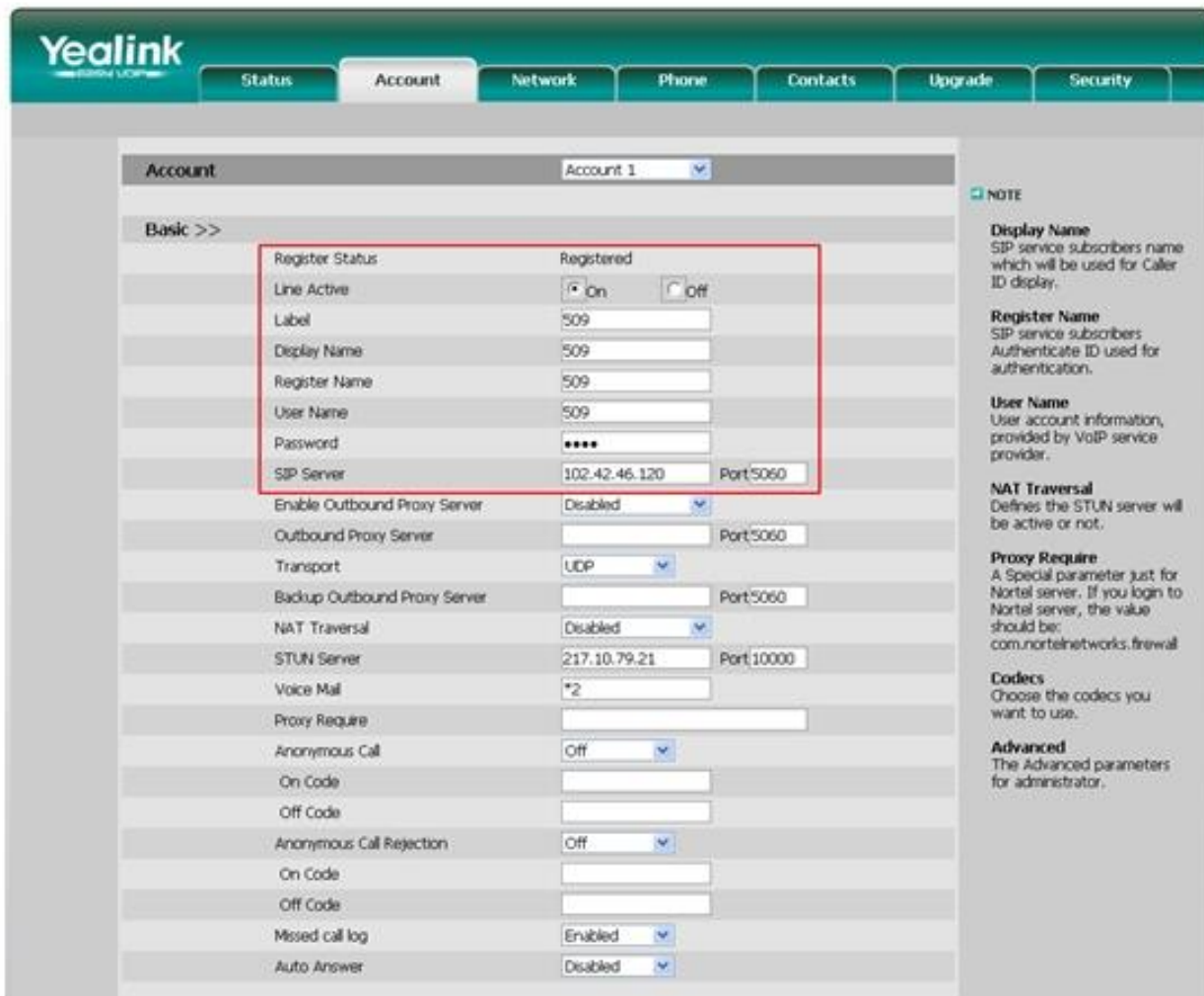
The 'Mobility Extension' section shows the 'Enable Mobility Extension' checkbox unchecked and an empty input field for the 'Mobility Extension Number'.

The 'Call Duration Setting' section shows an empty input field for 'Max Call Duration' followed by 's'.

At the bottom of the page, there are 'Save' and 'Cancel' buttons.

Figure 2

**Korak 4:** Podesite registraciju IP telefona na lokal 509. (napr.: Yealink IP Telefon) Ukoliko pravilno povežete, status registracije će postati "Registered".



The screenshot shows the Yealink SIP Account configuration interface. The 'Account' tab is active, and the 'Basic' sub-tab is selected. The 'Register Status' is set to 'Registered'. A red box highlights the registration details:

Register Status	Registered
Line Active	<input checked="" type="radio"/> On <input type="radio"/> Off
Label	509
Display Name	509
Register Name	509
User Name	509
Password	••••
SIP Server	102.42.46.120 Port 5060

Other visible settings include:

- Enable Outbound Proxy Server: Disabled
- Outbound Proxy Server: Port 5060
- Transport: UDP
- Backup Outbound Proxy Server: Port 5060
- NAT Traversal: Disabled
- STUN Server: 217.10.79.21 Port 10000
- Voice Mail: \*2
- Proxy Require: (empty)
- Anonymous Call: Off
- On Code: (empty)
- Off Code: (empty)
- Anonymous Call Rejection: Off
- On Code: (empty)
- Off Code: (empty)
- Missed call log: Enabled
- Auto Answer: Disabled

On the right side, there is a 'NOTE' section with several informational paragraphs: Display Name, Register Name, User Name, NAT Traversal, Proxy Require, Codex, and Advanced.

Slika 3

<Kraj>